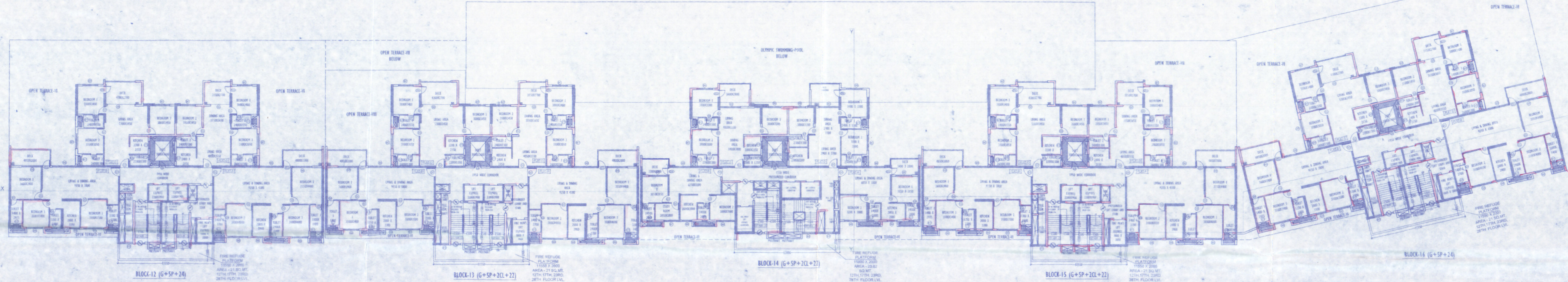
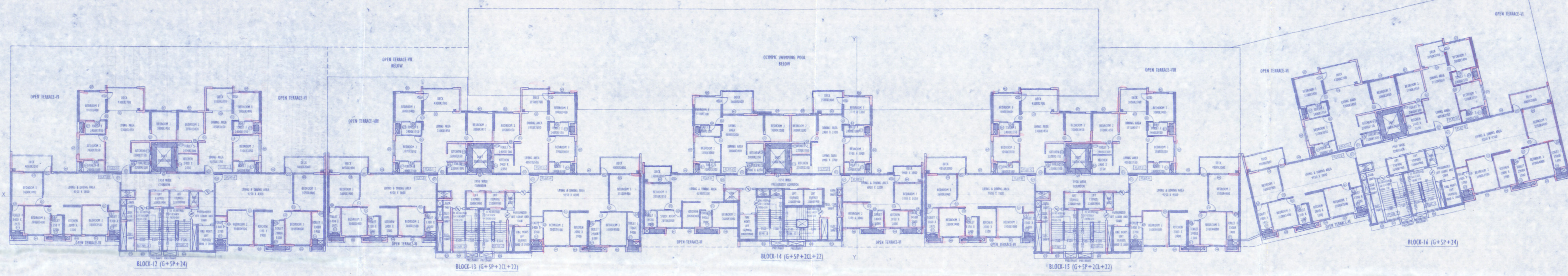


ROOF FLOOR PLAN (BLOCK- 12, 13, 14, 15 & 16)



12TH, 17TH, 23RD, 28TH FLOOR PLAN (FIRE REFUGE) (BLOCK- 12, 13, 14, 15 & 16)



TYPICAL FLOOR PLAN (BLOCK- 12, 13, 14, 15 & 16)  
(8TH, 9TH, 10TH, 11TH, 13TH, 14TH, 15TH, 16TH, 18TH, 19TH, 20TH, 21ST, 22ND, 24TH, 25TH, 26TH, 27TH & 29TH FLOOR)

GENERAL NOTE:

1. ALL DIMENSIONS ARE IN MILLIMETRES
2. THIS DRAWING SHOULD BE READ IN CONJUNCTION WITH ALL OTHER RELEVANT ARCHITECTURAL DRAWINGS.
3. ONLY WRITTEN DIMENSIONS SHALL BE FOLLOWED.
4. FOR DETAILED DESCRIPTION OF ITEMS REFER TECHNICAL SPECIFICATION.
5. ALL FIN. LEVELS/OPENINGS/HEIGHTS/STRUCTURAL LEVELS/DIMENSIONS WITHOUT FINISH.
6. FOR DIMENSIONS OF BEAM, COL. & OTHERS STRUCTURAL MEMBERS SHOULD BE FOLLOWED THE STRUCTURAL DWG.

DOOR AND WINDOW OPENING SCHEDULE			
Sl. No.	DESCRIPTION	WIDTH	HEIGHT
01	WOODEN DOOR	900	2000
02	WOODEN WINDOW	1200	1500
03	ALUMINIUM WINDOW	1200	1500
04	ALUMINIUM WINDOW	1500	1500
05	ALUMINIUM WINDOW	1800	1500
06	ALUMINIUM WINDOW	2100	1500
07	ALUMINIUM WINDOW	2400	1500
08	ALUMINIUM WINDOW	2700	1500
09	ALUMINIUM WINDOW	3000	1500
10	ALUMINIUM WINDOW	3300	1500
11	ALUMINIUM WINDOW	3600	1500
12	ALUMINIUM WINDOW	3900	1500
13	ALUMINIUM WINDOW	4200	1500
14	ALUMINIUM WINDOW	4500	1500
15	ALUMINIUM WINDOW	4800	1500
16	ALUMINIUM WINDOW	5100	1500
17	ALUMINIUM WINDOW	5400	1500
18	ALUMINIUM WINDOW	5700	1500
19	ALUMINIUM WINDOW	6000	1500
20	ALUMINIUM WINDOW	6300	1500
21	ALUMINIUM WINDOW	6600	1500
22	ALUMINIUM WINDOW	6900	1500
23	ALUMINIUM WINDOW	7200	1500
24	ALUMINIUM WINDOW	7500	1500
25	ALUMINIUM WINDOW	7800	1500
26	ALUMINIUM WINDOW	8100	1500
27	ALUMINIUM WINDOW	8400	1500
28	ALUMINIUM WINDOW	8700	1500
29	ALUMINIUM WINDOW	9000	1500
30	ALUMINIUM WINDOW	9300	1500
31	ALUMINIUM WINDOW	9600	1500
32	ALUMINIUM WINDOW	9900	1500
33	ALUMINIUM WINDOW	10200	1500
34	ALUMINIUM WINDOW	10500	1500
35	ALUMINIUM WINDOW	10800	1500
36	ALUMINIUM WINDOW	11100	1500
37	ALUMINIUM WINDOW	11400	1500
38	ALUMINIUM WINDOW	11700	1500
39	ALUMINIUM WINDOW	12000	1500
40	ALUMINIUM WINDOW	12300	1500
41	ALUMINIUM WINDOW	12600	1500
42	ALUMINIUM WINDOW	12900	1500
43	ALUMINIUM WINDOW	13200	1500
44	ALUMINIUM WINDOW	13500	1500
45	ALUMINIUM WINDOW	13800	1500
46	ALUMINIUM WINDOW	14100	1500
47	ALUMINIUM WINDOW	14400	1500
48	ALUMINIUM WINDOW	14700	1500
49	ALUMINIUM WINDOW	15000	1500
50	ALUMINIUM WINDOW	15300	1500
51	ALUMINIUM WINDOW	15600	1500
52	ALUMINIUM WINDOW	15900	1500
53	ALUMINIUM WINDOW	16200	1500
54	ALUMINIUM WINDOW	16500	1500
55	ALUMINIUM WINDOW	16800	1500
56	ALUMINIUM WINDOW	17100	1500
57	ALUMINIUM WINDOW	17400	1500
58	ALUMINIUM WINDOW	17700	1500
59	ALUMINIUM WINDOW	18000	1500
60	ALUMINIUM WINDOW	18300	1500
61	ALUMINIUM WINDOW	18600	1500
62	ALUMINIUM WINDOW	18900	1500
63	ALUMINIUM WINDOW	19200	1500
64	ALUMINIUM WINDOW	19500	1500
65	ALUMINIUM WINDOW	19800	1500
66	ALUMINIUM WINDOW	20100	1500
67	ALUMINIUM WINDOW	20400	1500
68	ALUMINIUM WINDOW	20700	1500
69	ALUMINIUM WINDOW	21000	1500
70	ALUMINIUM WINDOW	21300	1500
71	ALUMINIUM WINDOW	21600	1500
72	ALUMINIUM WINDOW	21900	1500
73	ALUMINIUM WINDOW	22200	1500
74	ALUMINIUM WINDOW	22500	1500
75	ALUMINIUM WINDOW	22800	1500
76	ALUMINIUM WINDOW	23100	1500
77	ALUMINIUM WINDOW	23400	1500
78	ALUMINIUM WINDOW	23700	1500
79	ALUMINIUM WINDOW	24000	1500
80	ALUMINIUM WINDOW	24300	1500
81	ALUMINIUM WINDOW	24600	1500
82	ALUMINIUM WINDOW	24900	1500
83	ALUMINIUM WINDOW	25200	1500
84	ALUMINIUM WINDOW	25500	1500
85	ALUMINIUM WINDOW	25800	1500
86	ALUMINIUM WINDOW	26100	1500
87	ALUMINIUM WINDOW	26400	1500
88	ALUMINIUM WINDOW	26700	1500
89	ALUMINIUM WINDOW	27000	1500
90	ALUMINIUM WINDOW	27300	1500
91	ALUMINIUM WINDOW	27600	1500
92	ALUMINIUM WINDOW	27900	1500
93	ALUMINIUM WINDOW	28200	1500
94	ALUMINIUM WINDOW	28500	1500
95	ALUMINIUM WINDOW	28800	1500
96	ALUMINIUM WINDOW	29100	1500
97	ALUMINIUM WINDOW	29400	1500
98	ALUMINIUM WINDOW	29700	1500
99	ALUMINIUM WINDOW	30000	1500
100	ALUMINIUM WINDOW	30300	1500

WE HEREBY CERTIFY THAT THE FOUNDATION AND SUPERSTRUCTURE OF THE BUILDING PROPOSED FOR CONSTRUCTION ON PLOT, HOLDING NO C4-173/NEW GANGA BANDH ROAD, UNDER MAHESHTALA MUNICIPALITY, WARD NO -20, P.S. MAHESHTALA, KOLKATA - 700 140, SOUTH 24 PARGANAS, HAVE BEEN SO DESIGNED BY ME/US WILL MAKE SUCH FOUNDATION AND SUPERSTRUCTURE SAFE IN ALL RESPECT INCLUDING THE CONSIDERATION OF BEARING CAPACITY AND SETTLEMENT OF SOIL ETC.

**ALOK ROY**  
 Structural/Geotechnical Engineer  
 Kolkata Municipal Corporation  
 Class - I, No. 0, 1/1/11  
 6th, Midan Park,  
 Kolkata-700 004

SIGN OF GEO-TECHNICAL ENGINEER

WE HEREBY CERTIFY THAT THE FOUNDATION AND SUPERSTRUCTURE OF THE BUILDING PROPOSED FOR CONSTRUCTION ON PLOT, HOLDING NO C4-173/NEW GANGA BANDH ROAD, UNDER MAHESHTALA MUNICIPALITY, WARD NO -20, P.S. MAHESHTALA, KOLKATA - 700 140, SOUTH 24 PARGANAS, HAVE BEEN SO DESIGNED BY ME/US WILL MAKE SUCH FOUNDATION AND SUPERSTRUCTURE SAFE IN ALL RESPECT INCLUDING THE CONSIDERATION OF BEARING CAPACITY AND SETTLEMENT OF SOIL ETC.

**SANJIV KUMAR**  
 M.E. CIVIL ENGINEER  
 R.C.T. FLOOR-2/11  
 1/11, MIDAN PARK,  
 KOLKATA-700 004

SIGN OF STRUCTURAL REVIEWER

WE HEREBY CERTIFY THAT THE FOUNDATION AND SUPERSTRUCTURE OF THE BUILDING PROPOSED FOR CONSTRUCTION ON PLOT, HOLDING NO C4-173/NEW GANGA BANDH ROAD, UNDER MAHESHTALA MUNICIPALITY, WARD NO -20, P.S. MAHESHTALA, KOLKATA - 700 140, SOUTH 24 PARGANAS, HAVE BEEN SO DESIGNED BY ME/US WILL MAKE SUCH FOUNDATION AND SUPERSTRUCTURE SAFE IN ALL RESPECT INCLUDING THE CONSIDERATION OF BEARING CAPACITY AND SETTLEMENT OF SOIL ETC.

**ANKIT AGARWALA**  
 M.E. CIVIL ENGINEER  
 CLASS - I, NO. 0, 1/1/11  
 6TH, MIDAN PARK,  
 KOLKATA-700 004

SIGN OF STRUCTURAL ENGINEER

WE HEREBY CERTIFY THAT THE FOUNDATION AND SUPERSTRUCTURE OF THE BUILDING PROPOSED FOR CONSTRUCTION FOR ROYAL GANGES - I (Phase -B), AT HOLDING NO C4-173/NEW GANGA BANDH ROAD, UNDER MAHESHTALA MUNICIPALITY, WARD NO -20, P.S. MAHESHTALA, KOLKATA - 700 140, SOUTH 24 PARGANAS, HAVE BEEN SO DESIGNED BY ME/US WILL MAKE SUCH FOUNDATION AND SUPERSTRUCTURE SAFE IN ALL RESPECT INCLUDING THE CONSIDERATION OF BEARING CAPACITY AND SETTLEMENT OF SOIL ETC.

**Subir Kumar Basu**  
 Registered Architect  
 Reg. No. - CA/78/375

SIGN OF ARCHITECT

WE HEREBY CERTIFY THAT THE FOUNDATION AND SUPERSTRUCTURE OF THE BUILDING PROPOSED FOR CONSTRUCTION FOR ROYAL GANGES - I (Phase -B), AT HOLDING NO C4-173/NEW GANGA BANDH ROAD, UNDER MAHESHTALA MUNICIPALITY, WARD NO -20, P.S. MAHESHTALA, KOLKATA - 700 140, SOUTH 24 PARGANAS, HAVE BEEN SO DESIGNED BY ME/US WILL MAKE SUCH FOUNDATION AND SUPERSTRUCTURE SAFE IN ALL RESPECT INCLUDING THE CONSIDERATION OF BEARING CAPACITY AND SETTLEMENT OF SOIL ETC.

**Subir Kumar Basu**  
 Registered Architect  
 Reg. No. - CA/78/375

SIGN OF ARCHITECT

**PROJECT :-**  
 PROPOSED RESIDENTIAL COMPLEX (ROYAL GANGES - I) (PHASE - I) CONTAINING EXISTING 22 NOS ROW HOUSES (G+2), (HEIGHT - 9.6 M), 9 NOS TOWN HOUSES (G+5)(HEIGHT - 20 METER) AND PROPOSED 2NOS TOWERS (G+5P+24)(HEIGHT - 105.72 METER), 9 TOWN HOUSES (G+5) (HEIGHT - 20 METER) AND 12 ROW HOUSES (G+2)(HEIGHT - 9.6 METER), FOR SRIJAN COMPLEX PVT. LTD & 109 OTHERS AT HOLDING NO - C4-173 / NEW, GANGA BANDH ROAD, MOUZA KRISHNANAGAR, JL. NO - 1, L.R. KHATAN NO - 10125, 10128, 10129, 10136, 10138-10141, 10143, 10145-10161, 10164 - 10220, 10223 - 10225, 10228, 10230 - 10238, 10242 - 10245, 10253 - 10257, 10292 - 10294, 10596 - 10597, L.R. DAG NO. 312(PART), 312 / 1157, 312/1222(PART), 312 / 1474(PART), 313, 314, 314 / 1217, 315, 315 / 1473, 316 TO 324, 380, 381(PART), 153/1475 UNDER MAHESHTALA MUNICIPALITY, WARD NO - 20, P.S. MAHESHTALA, KOLKATA - 700 140, SOUTH 24 PARGANAS.

**DWG. TITLE - BLOCK - 12 & 16 (G+SP+24) & 13,14,15(G+SP\_2CL+22)**

**SHEET TITLE- TYPICAL FLOOR PLAN, FIRE REFUGE PLAN & ROOF PLAN**

**ARCHITECT**  
**Subir Kumar Basu**  
 CONSULTING ARCHITECTS & ENGINEERS  
 4, BROAD STREET  
 KOLKATA-700019  
 Website: www.subirkumarbasu.com

SCALE: 1:175  
 SHEET: SEE AB  
 DRAWING NO: SB/RO/TH/MA/05  
 DATE: 15/11/2022  
 SHEET NO: 05





ORIGINAL COPY / ENGLISH / 2004  
 DEMOLITION WORK DRAWING  
 FINAL DEMOLITION PLAN

Project Name: **APARTMENT BUILDING**  
 Location: **1000 BROAD STREET, NEW YORK, NY**

Scale: **1/8" = 1'-0"**  
 Date: **03/10/04**

Prepared by: **ARCHITECT**  
 Checked by: **ARCHITECT**

Approved by: **ARCHITECT**  
 Date: **03/10/04**

Construction permit or other activity according to applicable law.

**APARTMENT BUILDING**

PROJECT: **APARTMENT BUILDING**  
 LOCATION: **1000 BROAD STREET, NEW YORK, NY**  
 SCALE: **1/8" = 1'-0"**  
 DATE: **03/10/04**

DESCRIPTION: **DEMOLITION WORK DRAWING**  
 PREPARED BY: **ARCHITECT**  
 CHECKED BY: **ARCHITECT**  
 APPROVED BY: **ARCHITECT**

PROJECT: **APARTMENT BUILDING**  
 LOCATION: **1000 BROAD STREET, NEW YORK, NY**  
 SCALE: **1/8" = 1'-0"**  
 DATE: **03/10/04**

DESCRIPTION: **DEMOLITION WORK DRAWING**  
 PREPARED BY: **ARCHITECT**  
 CHECKED BY: **ARCHITECT**  
 APPROVED BY: **ARCHITECT**

PROJECT: **APARTMENT BUILDING**  
 LOCATION: **1000 BROAD STREET, NEW YORK, NY**  
 SCALE: **1/8" = 1'-0"**  
 DATE: **03/10/04**

DESCRIPTION: **DEMOLITION WORK DRAWING**  
 PREPARED BY: **ARCHITECT**  
 CHECKED BY: **ARCHITECT**  
 APPROVED BY: **ARCHITECT**

PROJECT: **APARTMENT BUILDING**  
 LOCATION: **1000 BROAD STREET, NEW YORK, NY**  
 SCALE: **1/8" = 1'-0"**  
 DATE: **03/10/04**

DESCRIPTION: **DEMOLITION WORK DRAWING**  
 PREPARED BY: **ARCHITECT**  
 CHECKED BY: **ARCHITECT**  
 APPROVED BY: **ARCHITECT**